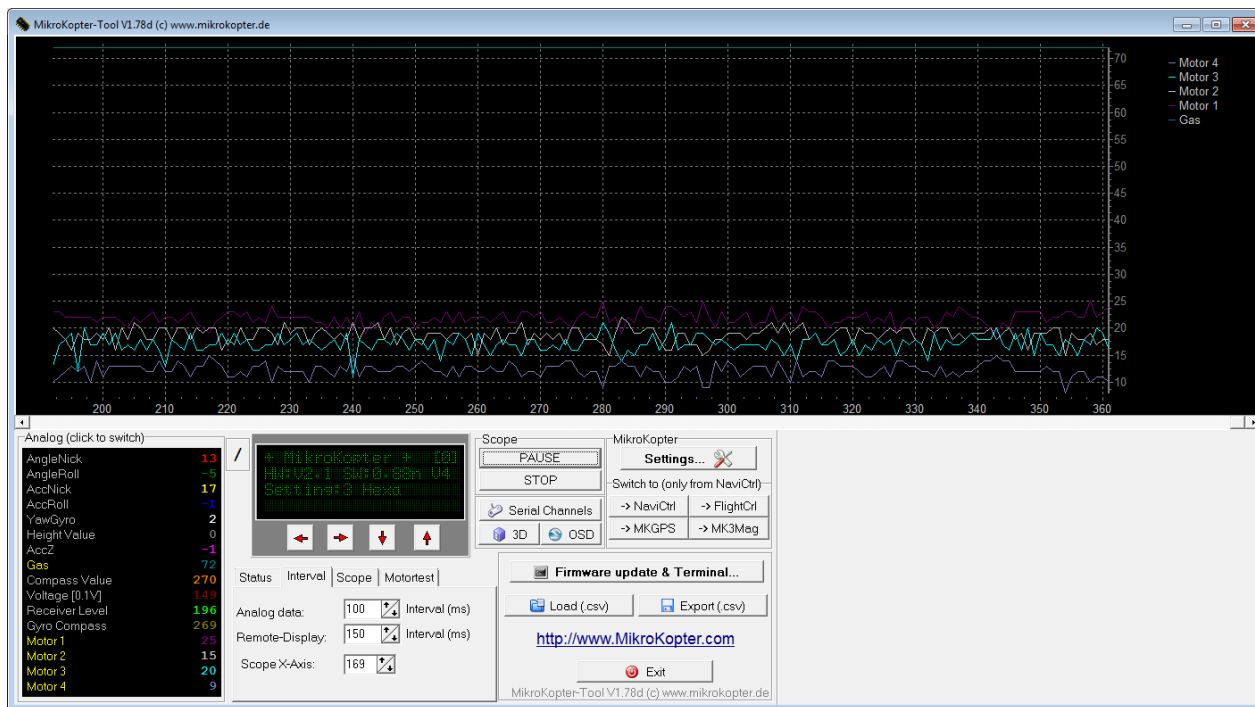
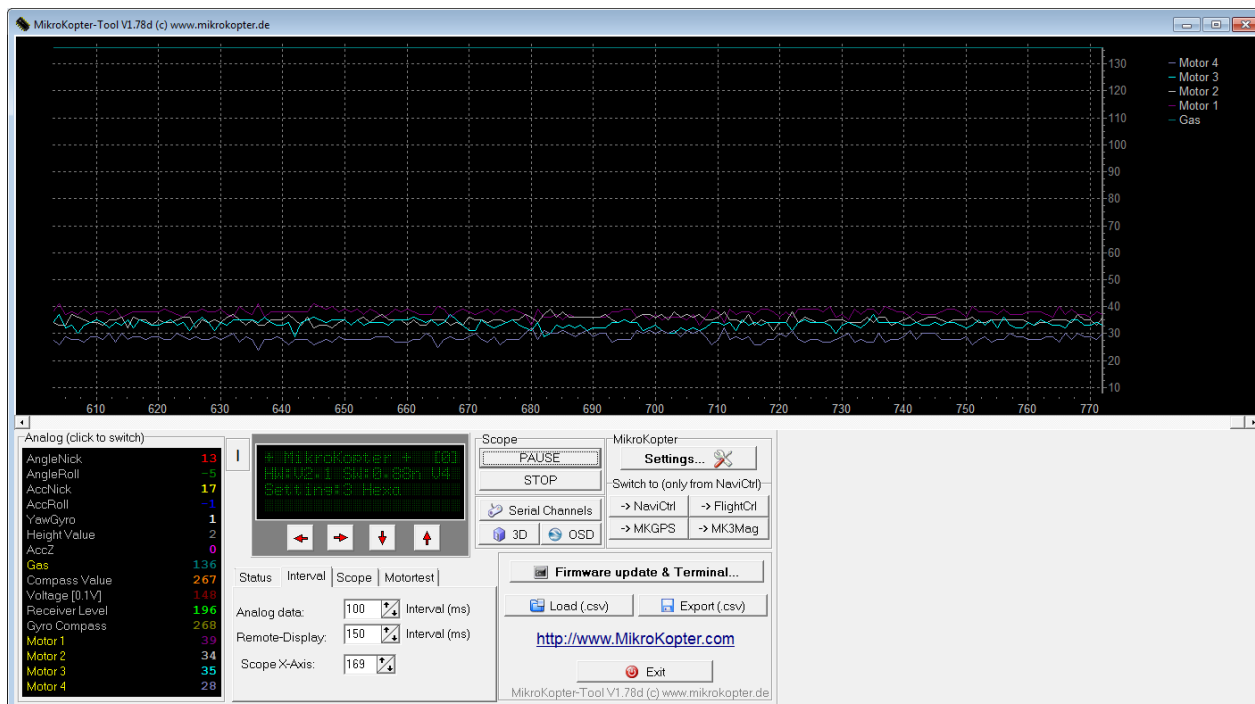


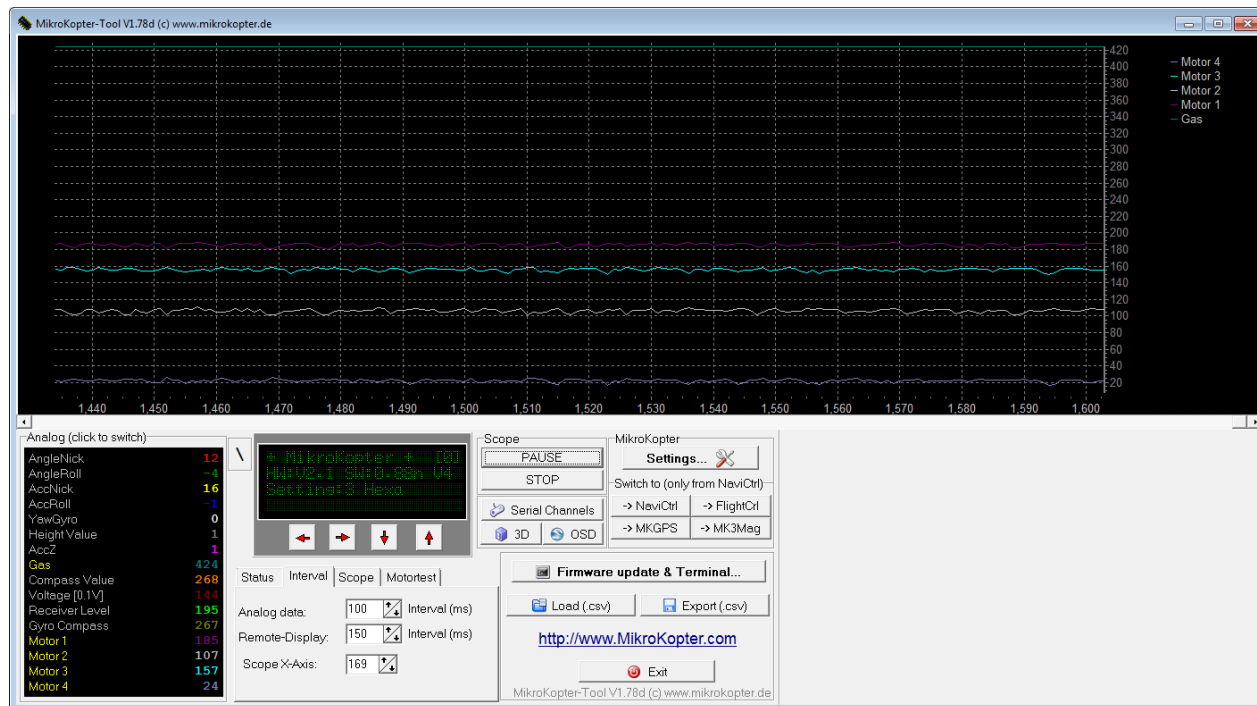
Started motors. Some Difference, not much across motors.



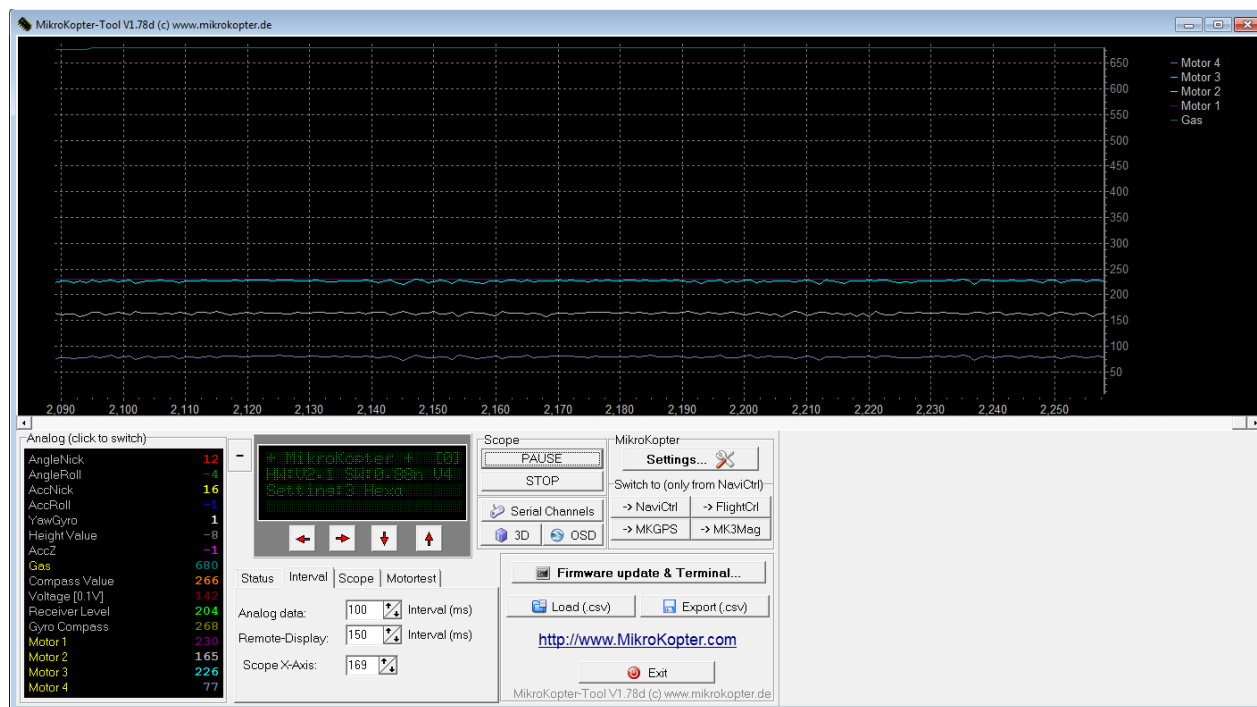
Increased throttle. Looks ok I think.



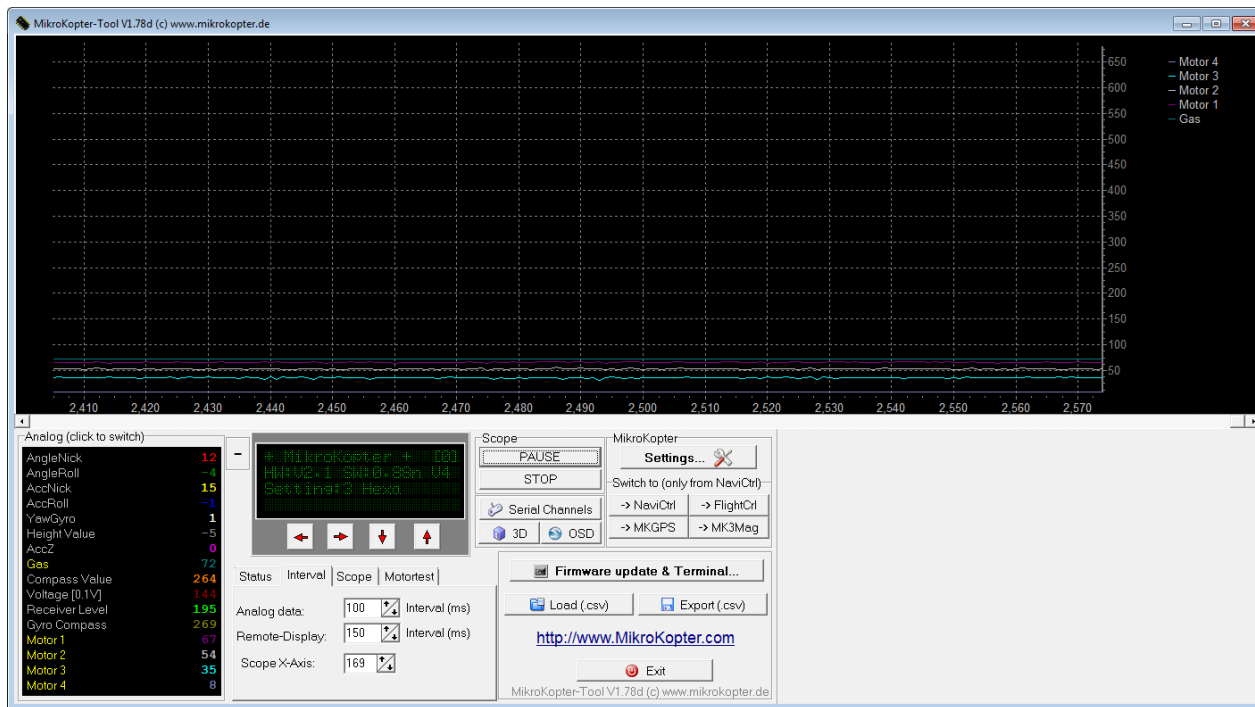
Increased throttle and waited... the gap continues until it look like this. Gap starts after a 30 seconds or so. Sometimes it is motor 1 other times it is motor 4. Do not know about 5 and 6.



Increased a little more.



Put throttle to bottom. Does not return to first scope. Not sure if issue or not.



Increased throttle. Motor 4 appears nothing happening. But I touched the motor and it seems to be increasing but does not show. Or is this correct?

